




TIPS & TRICKS

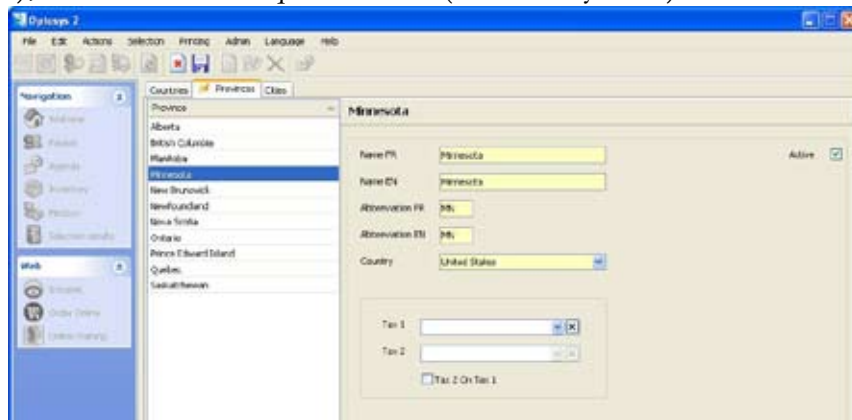
Did you know that you can add a U.S. address to your patient's file?


As the United States already exists in Optosys®2, all you need to do is add the state and the city.

1. To add the state select Admin → General Info → Provinces



2. Click on  (New), then fill in the required fields (shown in yellow).



3. Next click on the “Cities” tab, then  (New) and enter the information desired (shown in yellow).

