



OPTOSYS[®] INFO

4, Place du Commerce, Suite 460 • Montreal (Quebec) H3E 1J4
• Tel.: (514) 762-2020 • Fax: (514) 762-9933 • www.optosys2.com



Canada's Largest Network of Optometrists
www.opto.com

SUMMER SCHEDULE for the Technical Support Department

Beginning May 30th, the Technical Support Department will be open according to the following schedule:

**MONDAY TO THURSDAY FROM 8 A.M. TO 7 P.M. (EST)
FRIDAY FROM 8 A.M. TO 6:30 P.M. (EST)**



Don't hesitate to give us a call at 514-762-1954 or 1-866-660-6797.

TIPS & TRICKS

Did you know that you can add a U.S. address to your patient's file?

Follow the simple instructions on the reverse to learn how.

Deal of the month Online Purchases

www.opto.com/b2b

Patient File labels

Save on labels for Seiko SLP200 and SLP420 printers.

130 white labels – 3-1/2" x 1-1/8"

Box of 12 rolls**



\$50*

Welcome to fast
and easy ordering!

* Taxes and shipping not included. Orders must be received by June 30, 2008.
** Rolls cannot be sold individually. The regular price for a box of 12 rolls is \$60.

Calendar

We will be in your area soon.

It will be our pleasure to demonstrate the latest version of Optosys[®]2 to you, so come and see us.

September	October	November
- Red Deer, AB	- Regina, SK	- Montreal, QC - Markham, ON - Halifax, NS

OPTOSYS[®]2 INSTALLATIONS

May 2008



Centre D'Optométrie Ste-Hélène
Dr. Céline Éthier
Longueuil, QC

Centre De La Vision R.F. Inc.
Dr. Nathalie Allard and
Dr. Fernand Laflamme
Drummondville, QC




TIPS & TRICKS

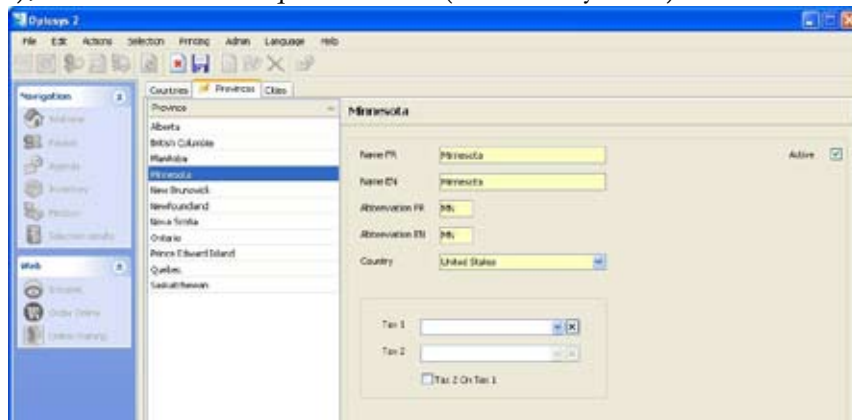
Did you know that you can add a U.S. address to your patient's file?


As the United States already exists in Optosys®2, all you need to do is add the state and the city.

1. To add the state select Admin → General Info → Provinces



2. Click on  (New), then fill in the required fields (shown in yellow).



3. Next click on the “Cities” tab, then  (New) and enter the information desired (shown in yellow).

