

Optosys® Info



Le plus grand réseau d'optométristes au Canada
www.opto.com

4, Place du Commerce, Suite 460, Montréal (Québec) H3E 1J4 Tel. : (514) 762-2020 Fax : (514) 762-9933 www.opto.com

September's Deal! Online Ordering



Inventory Labels
7/8" x 3/8"
Smart Label

Add them to your basket
for only 7 \$ *
250 labels

**Welcome to fast
and easy ordering!**

* Delivery not included

Internet High Speed

Are you waiting for the right moment?

That moment has arrived! In collaboration with OSI, Bell is pleased to offer our member high speed business Internet service for only **\$50.95*** per month and **Ultra** high speed business Internet service for **\$65.95*** per month.

Ultra not only provides you with rapid downloading abilities, it also provides you with a fixed IP address. This fixed address is required in order to be an Optosys®2 multiclinic user.

To learn more about this offer, consult the flyer in this month's mailing.



* Average rate - where the technology is available

OPTOSYS².com Installations

July and August 2006

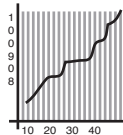
De Visu
Montréal, QC

Clinique Visuelle Gaston Rivest
St-Félicien, QC

Clinique Visuelle Gaston Rivest
Dolbeau, QC

Clinique d'Optométrie Sorel-Tracy
Sorel-Tracy, QC

Family Eye Care Centre of Victoria
Victoria, BC



Fall Calendar...

Come and meet us during your provincial tradeshow. It will be our pleasure to show you all the special effects to be found in Optosys®2

Moncton, NB – September 22nd

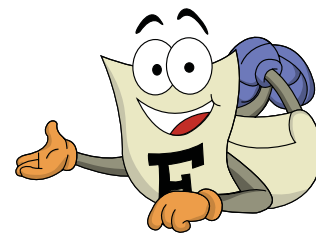
Edmonton, AB – September 29th

Regina, SK – October 27th

Montréal, QC – November 3rd and 4th

Markham, ON – November 11th

Halifax, NS - November 26th



You can also discover Optosys®2 from the comfort of your home or office if you have high-speed Internet. Contact Francine Simard at fsimard@opto.com.

Tips & Tricks OPTOSYS².com

What to do with error messages.

Occasionally you may receive an error message when using Optosys®2. The message will appear in a small window (reverse #1).

There are different actions available to you:

1. Simply close the window by clicking on OK.
2. Learn more about the problem by clicking on Details. (reverse #2).
3. Copy error details (reverse #3). This option allows you to paste the error into an e-mail message, Word document or Notepad.
4. Print the error message on the printer of your choice and fax it to us.
5. Automatically Send the error message directly to OSI's Customer Support Department over the Internet. The message will contain clinic information, user information, the software version and the computer used (reverse #4).
6. Update #17 will also allow you to attach your comments to the message (reverse #5).

We urge you to use the Send option. The information that we receive will allow us to improve our product.

A quick click for you translates into a mountain of information for us.☺

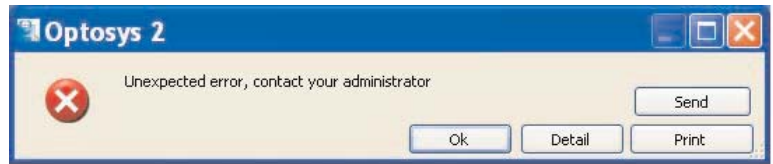
For an online demonstration, visit www.optosys2.com/formation

**OPTOSYS².com : The leading optometric practice management system...
Now connected to the world!**

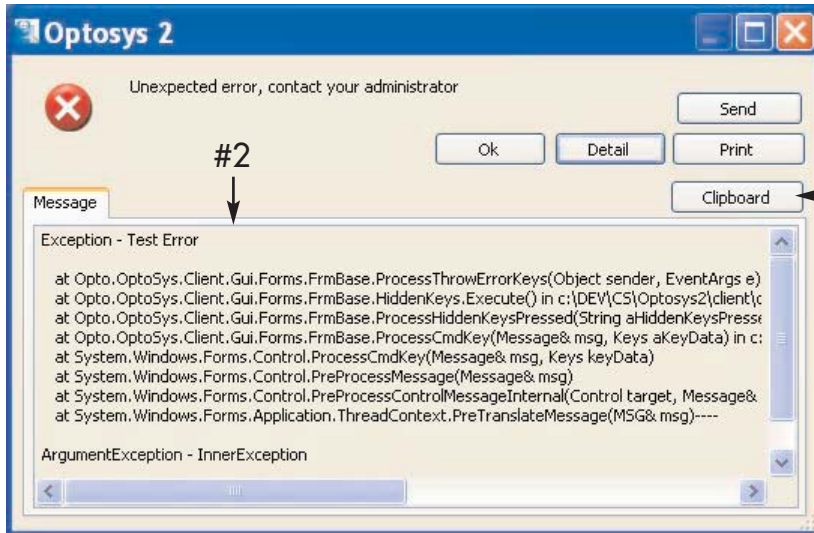
Note : These functions are available with Update # 16.

Tips & Tricks OPTOSYS².com

#1 →



#2 ↓



#3 →

```

-----
General Information
-----
Error date       : 2006/08/14 3:38 PM
Executable      : C:\Program Files\SOI-OSI\Optosys\Client
Path            : Opto.Optosys.exe
Version         : 2.0.16.8
Language        : en-CA
Windows XP or Greater : Yes
Machine name    : DISP1
Server          : http://servSOI/optosys/OptoSysServices.aspx

-----
Company Information
-----
Company code : 001
OSI Code    : 000

My Clinic
1234 Somewhere
Montréal (Québec)
Canada H3E 1J4

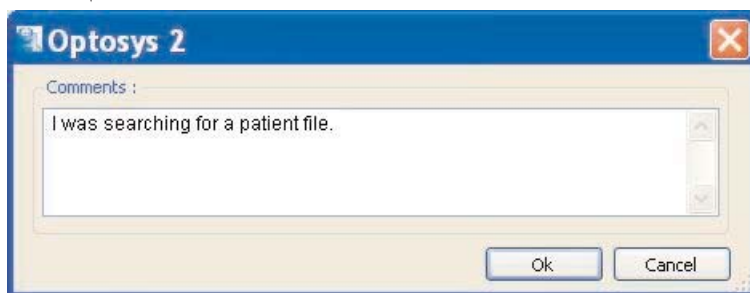
Phone : (514) 762-1234
Fax   : (514) 762-4321

-----
User Information
-----
Name       : France Lymburner
User name  : France
Code      : 07

-----
Error Information
-----
NullReferenceException - Object reference ...
    
```

#4 →

#5 ↓



Suggest a topic by writing to us at: OptosysInfo@opto.com