

Optosys® Info



4, Place du Commerce, Suite 460, Montréal (Québec) H3E 1J4 Tel. : (514) 762-2020 Fax : (514) 762-9933 www.opto.com

April's special Online Ordering

Save **10%**
On Hewlett-Packard
HP 5L, HP 6L, HP 1100 toners.

Welcome to fast
and easy ordering!

Does not apply to shipping charges. Shipping is extra.
Invoice will reflect discount.

Happy Easter!



Please take note that our offices will be closed on Friday, April 14, 2006.

Our Technical Support Team will be available to help you at the following numbers:

514-380-9279

or

1-866-660-6797

From 6:00 a.m. to 9:00 p.m. (EST)
365 days a year!

OPTOSYS² Installations



March 2006

Dr E.A. Ebata Optometric
Kamloops, BC

Pinehouse Optometric Group
Saskatoon, SK

Clinique D'Optométrie En Vue
Rimouski, QC

Vision Care Plus
Leduc, AB

Family Eyecare Clinic
Wetaskiwin, AB

Drayton Valley Eyecare
Drayton Valley, AB

What's hiding in your clipboard?

I hope it isn't your **credit card** number because the contents of your clipboard can be **stolen** when you're on certain web sites!

Take this test: copy something from Word®, Excel®, Notepad® or even Optosys®2, into your clipboard using the keyboard shortcut of **CTRL + C** or with the Copy icon and then go to <http://www.sourcecodesworld.com/special/clipboard.asp>. Your text will appear in the center of the page, highlighted in yellow.

Here's how to protect yourself:

1. In Internet Explorer, select *Tools – Internet Options*
2. Click on the *Security* tab (reverse #1)
3. Click on the *Custom Level* button (reverse #2)
4. Under *Scripting* go to *Allow paste operations via script* and select *Disable* (reverse #3).

Success! The contents in your clipboard are now secure. ☺

Tips & Tricks OPTOSYS².com

Access online products using Optosys®2

Here's how to **initialize your access** to our B2B in Optosys®2:

1. In the *Admin* menu, click on *Application* and then on *Default Values*.
2. In the *Application* tab click on the *Modify* button.
3. In the B2B section, enter your OSI code, user and password (reverse #4). This information can be found on your monthly statement.
4. Click on *Save* or use the *F10* key to save your changes.

Now let's **add a frames product from our B2B** to Optosys®2:

1. In a patient's eyeglass prescription window, click on *Product Search* in the frames section (reverse #5).
2. In the *Product Search* window, click on the *Order Online* tab (reverse #6).
3. Select the product type – ex. *Frame*.
4. Select a supplier – ex. *Aspex Group*.
5. Select a brand – ex. *Collection Horizon*.
6. Select the product number – ex. *MG747*.
7. Click on *Search*. The list of colours and sizes available will appear in the window.
8. Select the product desired.
9. The systems will ask you if the product should be imported into Optosys®2. Answer «Yes». The product has to exist in your system before you can order it.
10. All that's left is to enter the product's retail price.

This procedure can be used for other products. The B2B site is available wherever you can access a product search window.

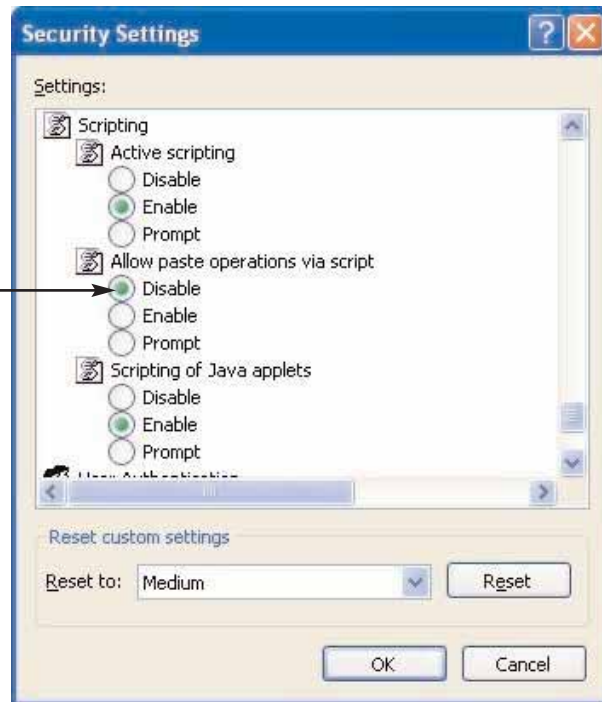
For an online demonstration visit www.optosys2.com/formation

Next month learn how to order this product online.



**: The leading optometric practice management system...
Now connected to the world!**

What's hiding in your clipboard?



Tips & Tricks

OPTOSYS².com

#4

B2B

Code SOI: 0

Username: soi

Password: [masked]

#5

Frame Clip-On Follow up Notes

[down arrow icon] No product selected

Color: [text box]

Lens Color: [text box]

Patient own Case included

#6

Product search

Optosys Order online

Product type: Frame

Product Number: [text box]

Details: Supplier: Groups Apex Group

Brand: COLLECTION HORIZON

Product: HQT747

Search Reset Select Cancel

Lens	Bridge	Temple	Color	Color Description	Lens Color	Cost	Category	Age
47	18	120	18	Shiny Brown	GREY	155.95	Frame	Adult
47	19	123	10	Dark Blue	GREY	155.95	Frame	Adult
47	18	125	20	Gunmetal	GREY	155.95	Frame	Adult

#7